

COVID-19 in Long-term Care

Mountain Plains COVID-19 ECHO Program

Jan 5, 2021

Cari Levy, MD, PhD

Palliative Care Section Chief

Director, Denver Center of Innovation for Veteran-Centered and Value-Based Research

Rocky Mountain Regional Veterans Affairs Medical Center,

Professor of Medicine

University of Colorado Division of Health Care Policy and Research

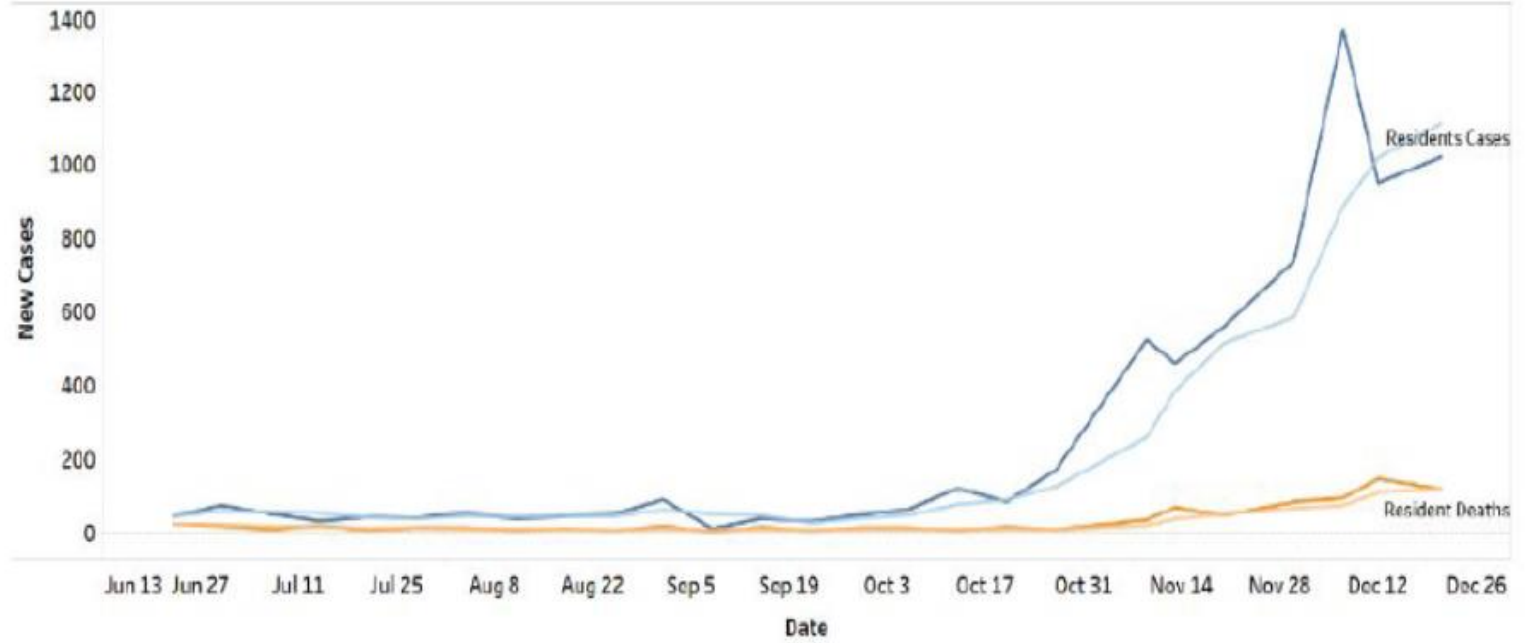
Sing Palat, MD

LTC Rehab Consultants

Assistant Clinical Professor, University of Colorado Division of Geriatrics

Epidemiology

New Resident Cases/Deaths by Week



Case Fatality Rate by Month Outbreak Identified



Average Outbreak Length by Month Identified



Which Residential Care Setting?

- *Rehab/ Post-acute*
- *SNF*
- *Long-term Care*
- *NH*
- *ALF*
- *Group home*
- *Senior housing*



Long-term Care environment in COVID-19

- Medicaid primary payer
- Isolation room
- Isolation units
- PPE
- Testing





COVID-19 Cohorts

1. COVID-19 Isolation Unit

- COVID-19 Positive
- Admitted from the hospital, still on transmission-based precautions
- Dedicated entrance/ exit, dedicated staff

2. Observation Unit

- All new or readmitted residents from hospital
- 14 days



COVID-19 Cohorts

3. Suspected: Symptomatic
4. Exposed: Close contact with COVID-19

Only residents with a confirmed COVID-19 test should be in a COVID-19 isolation area.

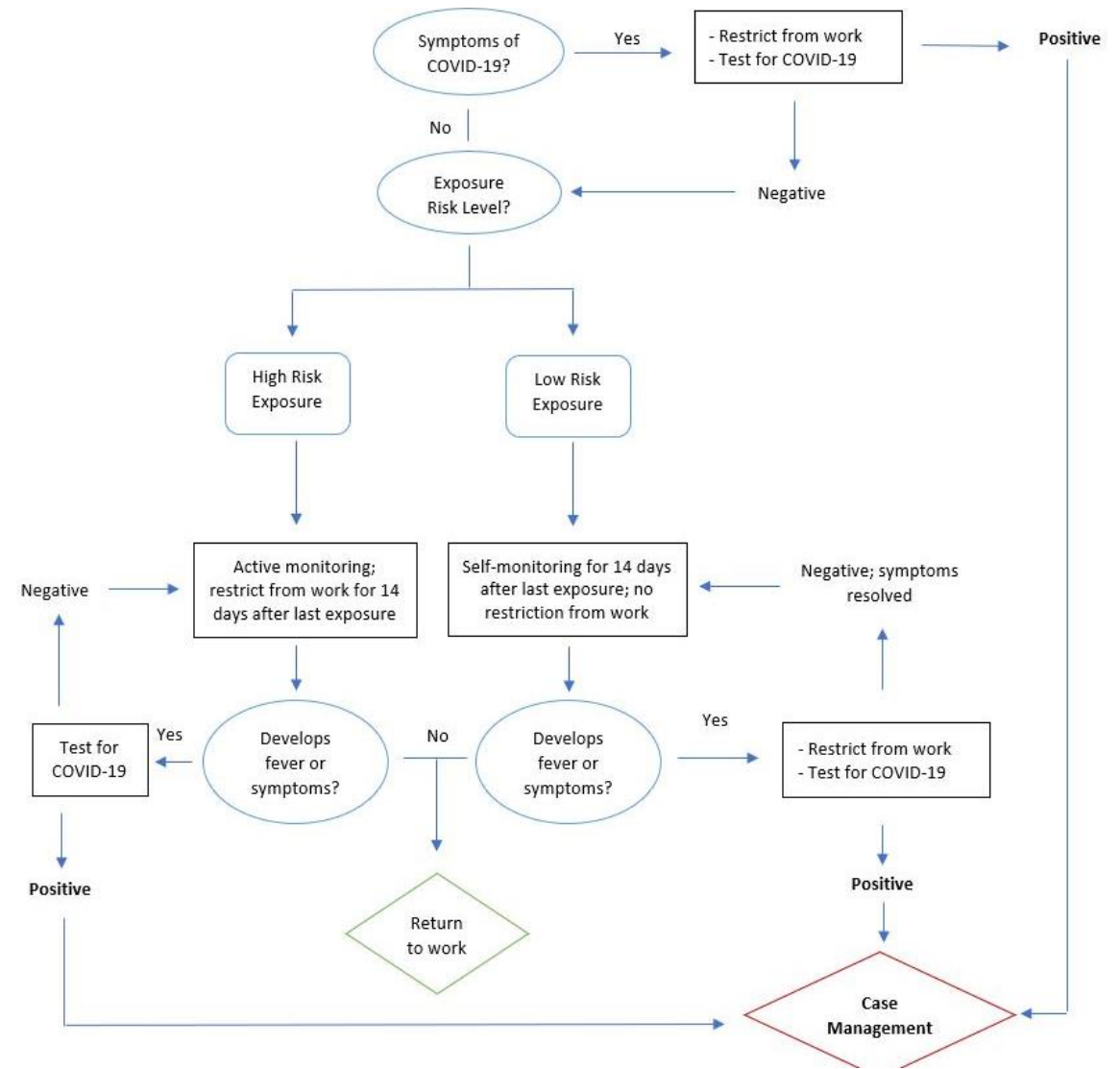
Residents who require observation or isolation should not participate in indoor or outdoor visitation

Surveillance Testing

| Community COVID- 19 Activity | County Positivity Rate in the past week | Minimum Testing Frequency | Type of Testing |
|------------------------------|---|---|-----------------|
| Low | <5% | Twice a month; weekly strongly encouraged | PCR |
| Medium | 5%-10% | Once a week | Antigen or PCR |
| High | >10% | Twice a week | Antigen or PCR |

Return to Work

- COVID-19 test positive/ negative
- Symptomatic/ Asymptomatic
- High/ Low risk exposure



Criteria for Allowing Indoor Visitation

- Low community spread
 - County cases <25 /100,000
 - County cases 26-175/100,000: visitor presents negative PCR test completed within 48 hours prior to visit
 - County cases >175/100,000: no indoor visitors
- Facility is outbreak-free (includes flu, norovirus etc)
 - Baseline testing completed for all staff, residents who have left building in past 14 days
 - During an outbreak, test every 3-7 days until no new cases for 14 days
- 14-day Supply of PPE is available
- Adequate Critical Staffing to assist visitors



Criteria for Allowing Outdoor Visitation

- Number of visitors limited, 8 or fewer
- Resident without COVID-19 symptoms or active infection
- Resident is not on transmission-based precautions
- Facility without active outbreak
- Within statewide restrictions
- Scheduled visits, all visitors screened

Thank You

